



CUSTOMER INFORMATION

Dealer Boot

Description:

The simple, pull-on design of our leather Dealer Boots makes them a great solution if you're constantly on the go. From construction to engineering, these boots are your number one choice.

- BS EN ISO 20345:2011 S1P SRC
- 200 joule steel safety toe cap
- Penetration resistant steel midsole
- Dual density PU oil resistant sole
- Anti-slip & antistatic sole
- Energy absorbing heel

Fabric:

- Black leather

Applications:

Risk assessed tasks requiring foot protection from a range of hazards

Colourways:



Black

Product Codes:

93270-7

5 - 12

Dealer Boot - Black

Standards:



EC Council Directive 89/686/EEC
BS EN ISO 20345:2011 S1P SRC

Size Chart:

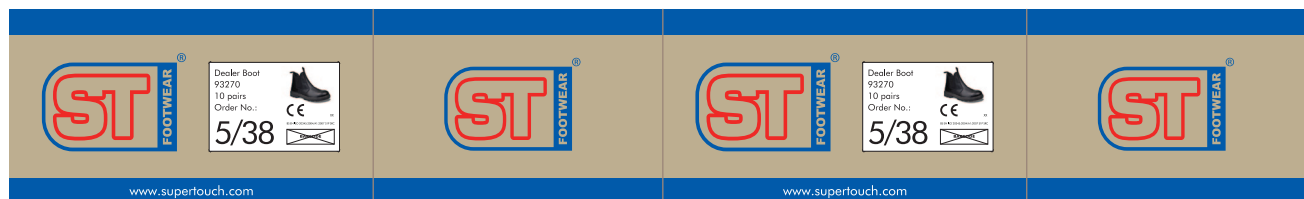
UK Size	3	4	5	6	7	8	9	10	11	12	13
EU Size	36	37	38	39	40	41	42	43	44	45	46

Issue No.: 2

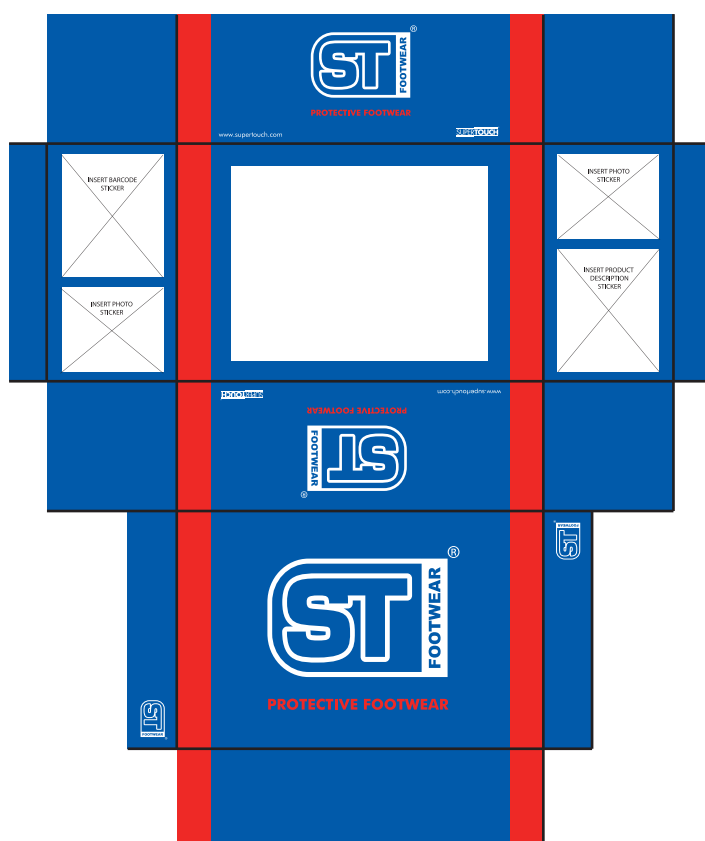
Issue Date: 22/08/2014

Packaging: 1 pair per box - 10 boxes per case

Outer Carton Artwork:



Inner Artwork:



Feature Symbols:



Product features
200J toe cap



Product features
reinforced midsole



Product features energy
absorbing heel



Product features
anti-slip sole



Product features
antistatic sole

The information shown on this specification sheet is intended as a guide and is advisory only. All details were correct at the time of issue. As conditions of use are ultimately beyond our control, we advise that the product is tested for the particular application before use.